



# PHI BETA KAPPA

NORTHERN CALIFORNIA ASSOCIATION  
THE GAMMA ASSOCIATION OF CALIFORNIA  
Association Chartered June 14, 1946

**March 2023**

Go to the Mobile copy <https://pbknca.com/2023-03MarchMobile/>

All memberships (except Auto Renewals) expired on December 31.

If you haven't yet joined, or renewed your membership,  
it is time to contribute now.

**If you have, we thank you!**

Not sure if you rejoined? Check [here](#) on the website

**Members for 2023 will be listed in, and receive, the upcoming hardcopy directory!**

Pay online at <https://pbknca.com/Join/Renew>

Or mail a check to PBKNCA, c/o Ms. Patricia Kenber VP membership, 1073 River  
Rock Lane, Danville CA 94526-4001

If you are eligible and will itemize, consider a [QCD from your IRA](#)

## From the President



I wrote this missive prior to our 36<sup>th</sup> annual Presidents' Weekend retreat at Asilomar, which this year was held 17-20 February. If you haven't ever before attended one of these retreats, you NEED to come! It is a learning experience like no other, and you'll meet PBK-NCA members who have come for decades and always say they are taking home so many new ideas. If you couldn't make the retreat this year, put it on your 2024 calendar as soon as you get one: it'll be held 16-19 February 2024.

During the year, PBK-NCA hosts visits to remarkable sites around our "neck of the woods," sign-ups for which are available on our Website: [www.pbknca.com](http://www.pbknca.com) and in our Newsletter (ably edited by Ray Hendess, my go-to person for historical information about the Association and all things Internet). Our First Vice-President for Programs, O'Neil Dillon ([oneilsdillon@gmail.com](mailto:oneilsdillon@gmail.com)) and his committee members (Judy Hardardt, James Richardson, Jean James, Becky Beach, Libby Tyler, Tina Hittenberger and *Young Professionals* Joy Wang and Whitney Roeder), plan most of the almost-monthly meet-ups that PBK-NCA offers throughout the year. Full event information, and means of credit card payment are available on our website <https://pbknca.com/Events/>.

If you should have a yen to serve our Association on a committee, please let me know at [mltg@aol.com](mailto:mltg@aol.com). We can probably match a job to your interests and qualifications. There are also opportunities for one-off activities (at this time of year I'm thinking Audit Committee) and helping with tours/visits.

I look forward to meeting you at one of our upcoming activities, and I thank you for your continued support of Phi Beta Kappa Northern California Association.

With best regards, Mary Turner Gilliland, PBK-NCA President

## Upcoming Events

Currently, the Phi Beta Kappa Northern California Association suggests masking for indoor activities.

Note: The price of the events is for current NCA members; elapsed- or non-members will pay a surcharge. Full event information, and means of credit card payment, are available on our website <https://pbknca.com/Events/>. If you want to register for an event but don't have Internet access, please contact O'Neil, cell 510-207-8761.

If you won't be able to make an event, contact O'Neil Dillon at [oneilsdillon@gmail.com](mailto:oneilsdillon@gmail.com) ASAP, or if it is the day of the event call him at 510-207-8761, as there may be others on the waiting list who will then be able to take your place.

No-shows do NOT receive a refund!

### [Truhlsen-Marmor Museum of the Eye](#)

**March 18, 2023, 10:00 AM @ 645 Beach St., San Francisco (Fisherman's Wharf). Parking On-street, and right next door at the Hyde St. Parking Garage. Fee \$20, members; \$30 non-members. (\$10-20 goes to scholarships)**



When you register, we prefer you pay online *via* the black “**REGISTER**” button. But you may mail the coupon and a check by snail mail. **Vaccination, booster and mask required at the event.** Go to <https://pbknca.com/event-5038265>

Private, docent-led tour of the Truhlsen-Marmor Museum of the Eye® March 18th @10AM.

Look through the pupil of an enormous eye, explore interactive displays and try on a virtual reality headset to see how new technology can impact medicine.

Through high-tech exhibits and a renowned collection of ophthalmic artifacts, you'll discover surprising facts about how your vision works and about the field of medicine devoted to protecting it.

Through innovative exhibits, school tours, and free resource materials, the museum promotes eye health on a broad scale.

Visitors of all ages will enjoy the interactive displays and:

- Learn how VR is changing ophthalmology
- Dive deeply into the historical collection
- See the evolution of eye care through the ages
- Learn about the latest innovations saving sight today
- Develop an interest in the study of medicine and ophthalmology

**The museum will be closed to the public during our tour.**

Date: Saturday March 18 at 10 AM.

Address: 645 Beach St., San Francisco (Fisherman's Wharf)

Parking, On street, and right next door at the Hyde St. Parking Garage

Directions by Car, Bus, Bike and Foot [here](#)

Cost: \$20, PBKNCA members. \$30, non-members.

(\$10 from either goes to Scholarships)

Duration; 45-60 minutes

Website: <https://www.aao.org/museum-of-the-eye>

**Mayo Family Winery: Enjoy a wine tasting with us, Sunday, March 19, 2023. Fee YP members, \$20; New Initiate members, free.**

Phi Beta Kappa Northern  
California Association Young  
Professionals Presents

**PBK  
WINE  
TASTING**

March 19  
12:00 PM  
Must RSVP

Mayo Family Winery  
13101 Arnold Dr #9446, Glen  
Ellen, CA 95442



Calling all Young Professionals! We're hosting a wine tasting event, on March 19th in Glen Ellen, CA at Mayo Family Winery. Join us to taste some wonderful family produced Mayo Wine, while connecting with other PBKNCA Young Professionals in the area.

**Date:** Sunday, March 19, 2023

**Time:** 12:00 pm start time

**Mt. Burdell (Novato) Nature Walk Saturday, April 15, 11:00 AM – 1:00 or 2:00 p.m. Fee: \$20 members, \$30 non-members. Full amount goes to scholarships.**



On the hike, we should see many wildflowers - among them blue-eyed grass, brodiaea, mallow, buttercups, cream cups, mules ears, poppies, and whatever else the experts among us can identify. Birders might sight lazuli buntings, lark sparrows, house wrens, red-tailed hawks, and turkey vultures. In addition to enjoying Mt. Burdell's several different species of oaks, we will encounter "bouncy trees" and an acorn granary tree. Those interested in agriculture might meet cows who use the open space this time of year as pasture, but move out of our way with a bit of encouragement

**History Cruise on the USS Potomac May 27, 2023, 10:30 AM, Fee \$53**



The USS Potomac was first commissioned "The Coast Guard Cutter Electra" on June 30, 1934. She was subsequently re-commissioned "The USS Potomac" in 1936, after being chosen to become the Presidential Yacht, enjoyed by then president Franklin Delano Roosevelt. As Roosevelt's "Floating White House," the Potomac is docked in Jack London Square. The history tour will include the story of the ups and downs (literally) of the ship, how it was adapted to serve the needs of a physically handicapped President, and all the while we will be enjoying the very special views one can get only from the waters of the San Francisco Bay.

**37<sup>th</sup> Annual [Asilomar Conference](#) – February 16 – 19, 2024**  
**Registration \$150 members, \$180 non-members. Plus Asilomar fees.**

If the news of the day is getting you down, take heart – it's once again time to reserve your weekend of learning, inspiration and fellowship on the magnificent Monterey coast!

Right now, Deirdre is working on the final details of this year's event. But she already has some ideas for next year!

To register, go to <https://pbknca.com/event-5159419>

**[PBKNCA Book Club](#)**



There is an ongoing virtual book club open to interested members. Contact Program VP O'Neil Dillon at [oneilsdillon@gmail.com](mailto:oneilsdillon@gmail.com)

**Review of the 36<sup>th</sup> Annual [Asilomar Conference](#) – Feb. 17 – 20, 2023.**

Full details at <https://pbknca.com/event-4695002>



***Friday night* – Nico Orlandi, Ph.D., Professor of Philosophy, U.C. Santa Cruz.**  
**“Concepts and Conceptual Engineering: The Concept of a Woman.”**

Everyone has an idea of what a woman is. But what is occurring in our heads when we think of a woman -- or a man, or a white man, or any other social concept? Philosophers and psychologists hold ideas as concepts; in this standard view, having the concept or idea of a woman consists of having a general description of what "being a woman" really means.

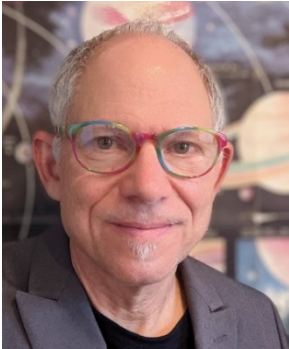
This talk explores a view that many of our ideas are simple labels in thought. Our labels act as a sort of headline, an umbrella under which a variety of information about that idea is catalogued -- for example, the notion that women are adult human females, or that they play a particular role in human reproduction. I suggest that the ideas we associate with the label do not, in fact, constitute that thing; *i.e.*, that it is not a conceptual truth that “women” are adult human females. This insight has direct implications for current public debates on trans inclusion – or on other womanly roles -- since the concept of “woman” does not imply a certain reproductive role by nature. This position also allows us to make sense of “conceptual engineering” – an idea we will explore in this talk.



***Saturday morning* – Kerry Driscoll, Ph.D., Associate Editor of the Mark Twain Papers and Project, U.C. Berkeley. “Mr. Clemens and the Saturday Morning Club of Hartford.”**

This presentation tells the little-known story of Mark Twain’s involvement with a group of young local women between the ages of 16 and 20, established in 1876 to “Promote Culture and Social Intercourse.” He assisted in the club’s founding and eventually became—as one member fondly recalled—its “patron saint.” He addressed the group on at least fifteen occasions (significantly, always in the role of “Mr. Clemens” rather than his *nom de plume*), and persuaded other literary friends to do the same. The writer’s devotion to the Club is most tangibly expressed in the exquisite pins he commissioned from Tiffany & Company in 1880 and presented as gifts to

its members. I will discuss Clemens’s role as confidant and mentor to these young women and explore the innovative methods he devised for cultivating their self-expression—offering a fascinating glimpse of the more serious side of our nation’s most celebrated humorist.



***Saturday night* – Tom Greene, Ph.D. Astrophysics, NASA Ames Center. "JWST: NASA's Greatest Observatory and its Fantastic Science."**

The James Webb Space Telescope is the most complex and powerful astronomical space observatory ever built. It launched on Christmas Day in 2021 and has recently been commissioned in its final orbit in the Sun – Earth system. The large 6.5-m diameter JWST primary mirror and its infrared instruments will allow it to see some of the very first luminous objects that formed in the Universe shortly after the Big Bang. Other major science themes of JWST encompass studying the assembly of galaxies, the birth of stars and planetary systems, and planetary systems and the origins of life. JWST will be the premier astrophysics space observatory for NASA and the European Space Agency (ESA), and scientists from all over the world

will use it for 10-20 years or more. It employs several unique technologies, and the mission was in development for over 20 years. In this talk I will illustrate the mission's science goals and highlight some aspects of its design, technologies, and initial science results.



***Sunday morning* – R. Jay Wallace, Ph.D., Professor of Philosophy, U.C. Berkeley, and PBK Visiting Scholar, 2022.**

***“Why Is Everyone So Angry?”***

My topic is the dominance of anger in our political culture and discourse, a phenomenon that I think Nietzsche's Genealogy of Morals sheds some light on. Nietzsche thought that large parts of aristocratic societies were consumed with “resentment,” a hostile attitude on the part of the dispossessed toward those who are structurally privileged. This negative emotional orientation eventually gives rise to a new scheme of moral values, which are adopted precisely because they enable the masses to make sense of their prior hostility and animus. So you have an original attitude of antagonism, and then a specific set of moral views becomes prevalent because of the way it renders this hostile orientation intelligible to those who are subject to it.

Something similar may be occurring in contemporary social processes. These are characterized by a tendency to form negative group identities, whereby we come to understand who we are by defining ourselves in opposition to other

groups. This leaves us with a hostile orientation toward the Other that doesn't really make sense morally or intellectually. Under these circumstances, we tend to accept narratives of grievance, which attribute to The Other moral infractions that justify and render intelligible our opposition to them, and thereby satisfy an emotional need. But the process of accepting such narratives turns our antagonism into chronic anger, which is characteristically an attitude of emotional opposition to moral wrongs.



***Sunday afternoon* – Forest Rohwer, Ph.D., Microbial ecologist and Professor of Biology at San Diego State University. PBK Visiting Scholar, 2022.  
“Coral Reefs and Piggybacking Viruses”**

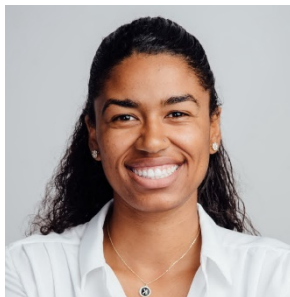
Coral reefs have dominated the tropical near-shore marine environment for hundreds of millions of years, so their rapid decline in recent times is distressing. The main coral stressors are overfishing and warm water events associated with climate change. I will talk about how these stressors change virus-microbe-coral symbioses and cause coral disease and reef decline. Then I will discuss tools to remediate both the overfishing and climate change problems with the goal of restoring coral reefs.

Forest Rohwer is a member of Phi Beta Kappa. He led the development of *viromics*, which involves isolating and sequencing the RNA/DNA from all of the viruses in a sample. From these data, it is possible to determine what types of viruses are present and what functions they are encoding. Dr. Rohwer has published more than 200 peer-reviewed articles, has won numerous national and international awards, and is listed as one of the World's Most Influential Scientific Minds. He has also published two books: “Coral Reefs in the Microbial Seas” and “Life in Our Phage World.”



***Sunday night* – Claire Waters, Ph.D., Professor of English at U.C. Davis.  
\*Mothers of Invention.\***

This talk will explore the apocryphal medieval narratives that feature mothers who undertake travel that helps to establish the Christian church in various ways. We will frame the project as a whole and then discuss specific narratives, for example concerning the finding ("invention") of the cross by St. Helena, the mother of the Emperor Constantine.



***Monday morning* – Kalyn Simon, MBA candidate at Santa Clara University.  
“California’s Water Reality.”**

California’s landscape, like those of a majority of places in the world, is shifting drastically. Climate change is forcing us to face a future projected to be much hotter and drier. California is home to some of the most beautiful and prosperous land which produces a majority of the fruit, nuts, and vegetables consumed in the United States. However, the harsh reality is that this produce as well as economic prosperity can only be sustained through access to water.

Water supply in a future of changing climate is concerning, but rather than focusing on climate change, we should be focusing on climate action. Rather than focusing on water scarcity, we should be focusing on building coalitions around water abundance through innovation. This presentation will highlight the intersection of climate, agriculture, water and innovation. We will take a deep dive into an often-controversial topic in California: desalination and the implications of tapping into the ocean as a new source of water to support the state and the world.

Kalyn Simon is an MBA candidate at Santa Clara University with a concentration in Food and Agriculture Entrepreneurship. Born and raised in the Bay Area, Kalyn received her BA and MA in International Studies at the University of San Francisco while playing Division 1 basketball. She is currently the Director of Corporate Engagement at Natural Ocean Well Co., and the Board Chair at Garden to Table Silicon Valley, a nonprofit farm in San Jose, California.

## **ΦBK Board, July 1, 2022 to June 30, 2023**

Mary Turner Gilliland, President

Menlo Park, (650) 321-9966, Mltg@aol.com

O'Neil Dillon, First Vice President – Programs

Berkeley, cell 510-207-8761, oneilsdillon@gmail.com

Joanne Sandstrom, Second Vice President – Scholarships

Oakland, (510) 339-1352, joannes@berkeley.edu

Patricia Kenber, Third Vice President – Membership

Danville, (925) 838-2296, kenber@sbcglobal.net

Duncan Missimer, Treasurer

Mountain View, (408) 368-0835, Duncan.missimer@ieee.org

Susan Jenkins, Corresponding and Recording Secretary

San Jose, (408) 532-6550, sjenkins4@yahoo.com

Deirdre Frontczak, Asilomar Chair

Santa Rosa, (707) 546-4238, dfrontczak@santarosa.edu

Amanda Sanyal, Chapter Liaison

Campbell, (650) 520-5419, a\_derry@yahoo.com

Ray Hendess, Communications Officer

Petaluma, (707) 364-7615, rhendess@gmail.com

Melissa X. Stevens, Teaching Excellence Chair

Rocklin, (530) 933-1550, pbkteachingexcellence@gmail.com

The Editor thanks Dr. Larry Lerner for proofing this newsletter